

IPBC



The IPBC horizontal lifting clamps have a pretension feature that allows the user to attach the clamps to the material for horizontal lifting and transfer of sagging and non-sagging material. These clamps may also be used to handle material that will be used in shears, bending and rolling machines or other fabrication equipment. May also be used for turning beams from the "H" into the "I" position.

For Horizontal Transfer - with Pretension System

- Available in capacities of 1 thru 4.5 metric tonnes.
- Jaw openings available: 0" to 1.56".
- Welded alloy steel body for strength and smaller size. Forged alloy components, where required.
- Individually Proof Tested to 2 times the Working Load Limit with certification.
- Company name (CrosbyIP), logo, Working Load Limit and jaw opening permanently stamped on body.
- Each product is individually serialized, with the serial number and Proof Load test date stamped on body. Serial number is included on the test certificate with maintenance and warranty logbook.
- Maintenance replacement parts are available.
- Manufactured by a ISO 9001 facility.
- All sizes are **RFID EQUIPPED**.

IPHGUZ

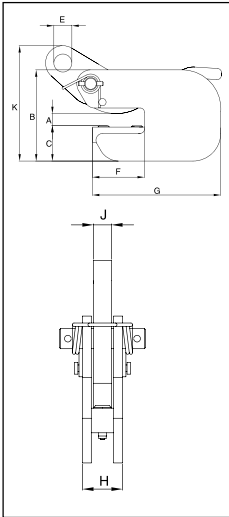


The IPHGZ, IPHGUZ horizontal lifting clamps have a pretension locking feature that allows the user to attach the clamps to the material for horizontal lifting and transfer of sagging and non-sagging material. These clamps may also be used to handle material that will be used in shears, bending and rolling machines or other fabrication equipment. May also be used to move and lift structural shapes such as I-Beams, H-beams etc.



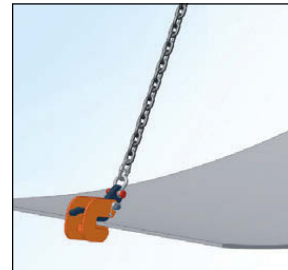
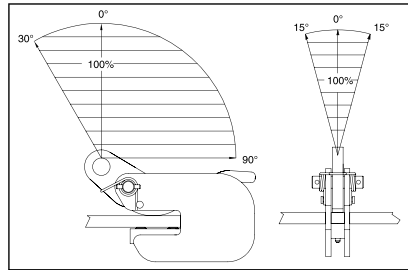
Load Rated

Model IPBC

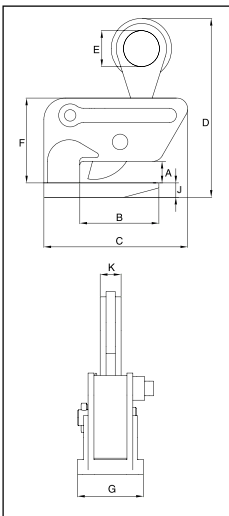


Model	Working Load Limit (t)*	IPBC Stock No.	Weight Each (lbs.)	Dimensions (in.)								
				Jaw A	B	C	E	F	G	H	J	K
IPBC	1	2700410	7.72	0 - .75	5.20	2.05	1.02	2.95	7.28	1.42	.63	7.17
IPBC	2	2700411	14.3	0 - 1.00	5.98	2.44	1.18	3.23	8.27	1.93	.79	8.58
IPBC	3	2700412	18.8	0 - 1.00	6.18	2.60	1.18	3.23	8.27	2.24	.79	8.86

* Design Factor based on EN 13155 and ASME B30.20.

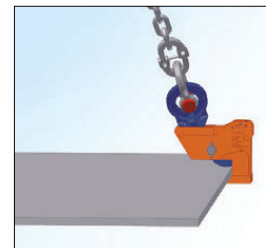
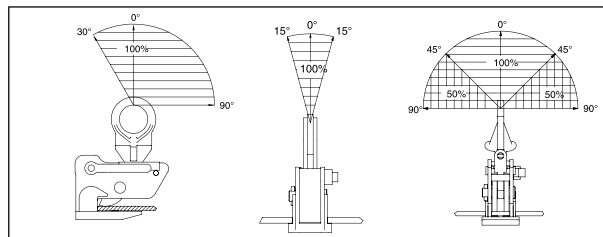


Model IPHGUZ: Universal Lifting Eye Model IPHGZ: Fixed Hoisting Eye



Model	Working Load Limit (t)*	Stock No.	Weight Each (lbs.)	Dimensions (in.)								
				Jaw A	B	C	D	E	F	G	J	K
IPHGUZ	1.5	2705455	19.8	0 - 1.00	4.33	9.13	11.30	2.76	5.47	3.54	.79	.63
IPHGUZ	3.0	2705456	43.9	0 - 1.56	4.69	9.96	13.70	2.95	6.89	4.72	.98	.79
IPHGUZ	4.5	2705457	66.1	0 - 1.56	4.69	11.85	14.57	3.15	6.89	6.10	1.18	1.73
Fixed Hoisting Eye												
IPHGZ	.75	2705451	8.82	0 - 1.00	3.23	5.83	8.11	1.97	3.90	3.86	.47	.87
IPHGZ	1.5	2705452	16.1	0 - 1.00	4.33	7.87	9.84	1.97	4.65	3.54	.79	1.10
IPHGZ	3.0	2705453	27.1	0 - 1.56	4.72	8.94	12.01	2.76	5.83	4.72	.98	1.26
IPHGZ	4.5	2705454	55.1	0 - 1.56	4.72	11.18	15.00	2.76	7.13	6.10	1.18	1.57

* Design Factor based on EN 13155 and ASME B30.20.



Industrial Rigging & Supply

Copyright © 2013 The Crosby Group LLC All Rights Reserved