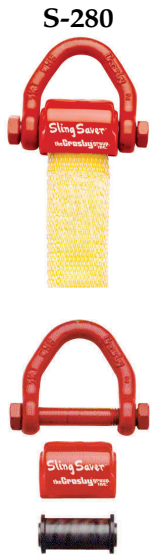
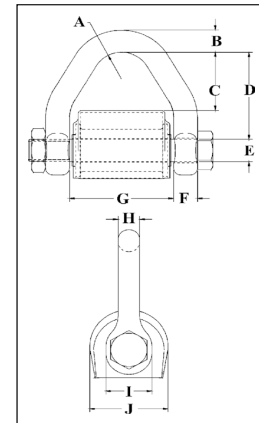


## Sling Saver® Load Rated "QT"



- All Alloy construction.
- Durable vinyl cover that:
  - Protects sling at eye
  - Keeps sling positioned correctly on spool.
- Design Factor of 5 to 1.
- Connects Synthetic Web and Synthetic Round Slings to conventional Crosby hardware including:
  - 320N Eye Hook
  - Additional Crosby Grade 8 Fittings
  - Master Links
  - Rings
  - Shackles
- Makes a field assembled bridle quick and easy.
- No cotter pin to snag sling material.
- Increased radius of spool gives wider sling bearing surface resulting in an increased area for load distribution, thus:
  - Increasing Synthetic Sling efficiency as compared to standard anchor and chain shackle bows and conventional eye hooks. This allows 100% of the slings rated Working Load Limit to be achieved.
  - Allowing better load distribution on internal fibers.
- Replacement kit for spool and web cover available.
- Designed for use with Type III (Eye & Eye), Class 7, 2 ply webbing & Synthetic Round Slings. Also accomodates single ply and endless slings.

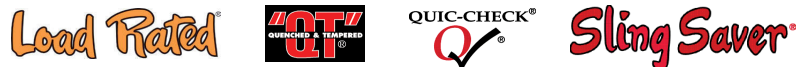


### S-280 Web Connector

Round Sling Size (No.)	Web Slings*			Working Load Limit (Tons)†	S-280 Stock No.	Weight Each (lbs.)	Dimensions (in.)									
	Webbing Width (in.)	Eye Width (in.)	Ply				A	B	C	D	E	F	G	H	I	J
1 & 2	2	2	2	3-1/4	1021681	1.5	.75	.62	1.63	2.44	.63	.62	2.69	.56	1.19	2.02
3	3	1.5	2	4-1/2	1021690	1.9	.75	.69	1.10	2.01	.75	.69	2.19	.60	1.38	2.34
4	4	2	2	6-1/4	1021700	2.9	.75	.81	1.66	2.56	.88	.75	2.69	.69	1.62	2.46
5 & 6	6	3	2	8-1/2	1021709	5.1	1.00	.94	2.47	3.50	1.00	.88	3.69	.88	1.88	2.84

\* Designed for use with Type III, (Eye & Eye), Class 7, 2 Ply web slings. For 3" and larger webbing width, tapered eye is required.  
 † Maximum Proof Load is 2 times the Working Load Limit. Minimum Ultimate strength is 5 times the Working Load Limit.

Crosby Sling Saver hardware meets the requirements for minimum stock diameter or thickness, and effective contact width shown in the Recommended Standards Specification for Synthetic Polyester Round Slings by the Web Sling & Tie Down Association. WSTDA-RS1 (revised 2010)

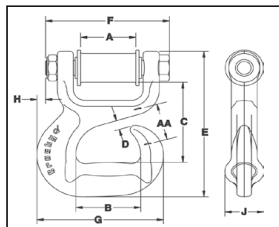


### S-287 CHOKER HOOK



- Available in 2 sizes: 3-1/4 tons (2" webbing) and 4-1/2 tons (3" webbing)
- Forged Alloy steel – Quenched & Tempered
- Design factor of 5 to 1.
- Each Connector has a Product Identification Code (PIC) for material traceability along with a Working Load Limit and the name Crosby forged into it.
- Special design of hook protects the synthetic sling when dropped or dragged.
- Designed to reduce friction, abrasion, and fraying in choker area.
- Uses same spool and cover as S-280 Web Connector.
  - Replacement Kit for Spool and Web Cover available.

### • 287 Sliding Choker Hook



Round Sling Size (No.)	Web Slings*			Working Load Limit (Tons) †	S-287 Stock No.	Weight Each (lbs.)	Dimensions (in.)									
	Webbing Width (in.)	Eye Width (in.)	Ply				A	B	C	D	E	F	G	H	J	AA
1 & 2	2	2	2	3-1/4	1021909	3.7	2.13	2.50	3.32	.38	6.03	4.77	4.88	.34	1.50	1.50
3	3	1.5	2	4-1/2	1021918	6.1	1.63	3.50	3.67	.38	7.06	4.53	6.51	1.36	1.88	—

\* NOTE: Designed for use with Type III, (Eye & Eye), Class 7, 2 Ply web slings.  
 † Maximum Proof Load is 2 times the Working Load Limit. Average straightening load (ultimate load) is 5 times the Working Load Limit.

Crosby Sling Saver hardware meets the requirements for minimum stock diameter or thickness, and effective contact width shown in the Recommended Standards Specification for Synthetic Polyester Round Slings by the Web Sling & Tie Down Association. WSTDA-RS1 (revised 2010)



**Industrial Rigging & Supply**

Copyright © 2013 The Crosby Group LLC All Rights Reserved