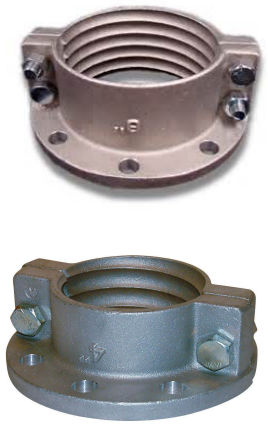


# Aluminum Split Flanges



BUCHANAN RUBBER LTD.

	Weight (lbs)	Std Pack Qty	Part #
2" Aluminum Split Flange	3.00	10	SFL-200-A
3" Aluminum Split Flange	4.40	10	SFL-300-A
4" Aluminum Split Flange	6.60	5	SFL-400-A
5" Aluminum Split Flange	7.50	4	SFL-500-A
6" Aluminum Split Flange	8.80	3	SFL-600-A
8" Aluminum Split Flange	13.30	2	SFL-800-A
10" Aluminum Split Flange	25.40	2	SFL-1000-A
12" Aluminum Split Flange	30.90	1	SFL-1200-A
14" Aluminum Split Flange	36.00	1	SFL-1400-A



## Hose Mine Stem

Description	Weight (lbs)	Part #
1/2"X1/2" MINE STEM	0.25	MS-050-050-SP
1/2"X1" MINE STEM	0.25	MS-050-100-SP
3/4"X1" MINE STEM	0.32	MS-075-SP
1" MINE STEM	0.35	MS-100-SP
1-1/4" MINE STEM	0.18	MS-125-SP
1-1/2" MINE STEM	0.79	MS-150-DP
2" MINE STEM	1.40	MS-200-DP



## Chamfered Threaded Nipple

Description	Weight (lbs)	Part #
1" SCHED 80 CHAMF THREADED NIPPLE	0.40	PN-100T



## Extra Long Mine Stem

Size	Weight (lbs)	Part #
2"	2.39	MSXL-200-DP



Industrial Rigging & Supply