

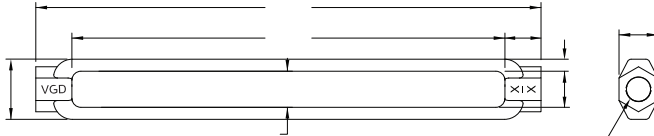






## TURNBUCKLE BODIES

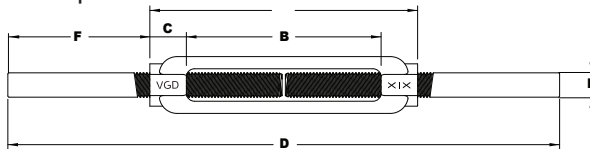
- ⌘ Meet the requirements of US Fed. Spec. FF-T-791B Type 1, Form 1 (open body)
- ⌘ Permanent embossed with R, L, VGD® and size for traceability to meet ASME B30.26
- ⌘ Forged carbon steel, heat treated by normalizing
- ⌘ Hot dipped galvanized
- ⌘ UNC Threads
- ⌘ Design factor proof load 2.5:1 the WLL - ultimate load 5:1 the WLL



Diameter x Take-Up E x B	Dimensions (inches)						Approx. Weight (lbs)	WLL (lbs)	
	A	C	D	G	H	R			
3/8 x 6	7.13	0.56	0.88	0.62	0.50	0.19	0.29	1,200	
1/2 x 6	7.51	0.75	1.12	0.81	0.62	0.25	0.60	2,200	
5/8 x 6	7.88	0.94	1.38	1.00	0.75	0.31	0.90	3,500	
3/4 x 6	8.18	1.08	1.63	1.12	0.94	0.38	1.30	5,200	
7/8 x 6	8.62	1.31	1.94	1.31	1.06	0.44	1.80	7,200	
1 x 6	9.00	1.50	2.25	1.50	1.25	0.50	2.48	10,000	
1-1/4 x 6	9.12	1.56	2.62	1.88	1.50	0.56	3.75	15,200	
1-1/2 x 6	9.78	1.88	3.00	2.25	1.75	0.62	6.50	21,400	

## STUB END TURNBUCKLES

- ⌘ Meet the requirements of US Fed. Spec. FF-T-791B Type 1, Form 1 (open body)
- ⌘ Permanent embossed with R, L, VGD® and size for traceability to meet ASME B30.26
- ⌘ Forged carbon steel bodies heat treated by normalizing. end fittings quenched and tempered
- ⌘ Self colored
- ⌘ UNC Threads
- ⌘ Design factor proof load 2.5:1 the WLL - ultimate load 5:1 the WLL



Diameter x Take-Up E x B	Dimensions (inches)				Approx. Weight (lbs)	WLL (lbs)	Vanguard Code
	A	C	D	F			
3/8 x 6	7.13	0.56	16.00	4.45	0.76	1,200	2926 1024C
1/2 x 6	7.50	0.75	16.00	4.25	1.54	2,200	2926 1032C
5/8 x 6	7.88	0.94	16.00	4.07	3.28	3,500	2926 1040C
3/4 x 6	8.25	1.13	17.00	4.38	3.79	5,200	2926 1048C
7/8 x 6	8.63	1.31	18.00	4.69	5.84	7,200	2926 1056C
1 x 6	9.01	1.51	19.00	5.01	9.04	10,000	2926 1100C

