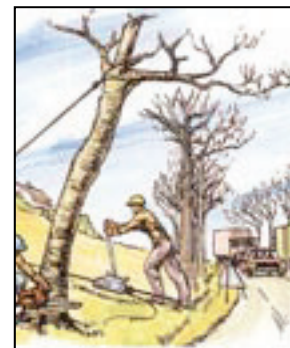
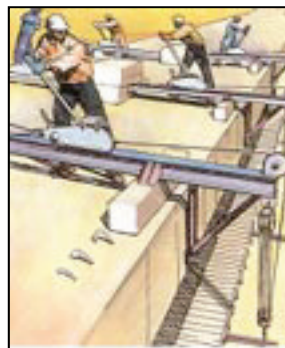
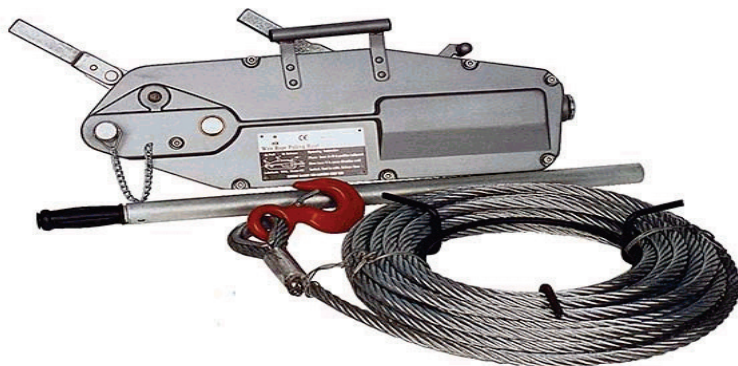


Wire Rope Winch c/w Wire Rope Assembly



Wire Rope Winch – c/w Wire Rope Assembly

- Safe, reliable, and efficient, these units are suitable for many applications.
- One man operated, using a telescopic handle, they work in any position and over any height of lift.
- Can replace conventional winches and other hoists for many applications.
- Proof load to the WLL, and use only properly sized dry galvanized wire rope provided with units.

| Capacity lifting | Capacity pulling | Rope dia. | Wt. Kg | Size | Drive step | c/w std wire length | Spare Replacement handles | |
|------------------|------------------|-----------|--------|-----------------|------------|---------------------|---------------------------|-------------|
| | | | | | | | Part Number | Part Number |
| 0.8 te | 1.3 te | 8 mm | 6 | 428 x 64 x 235 | 1 | 20 m | 6-0.8TWRWHANDLE | 6-0.8TWRW |
| 1.6 te | 2.6 te | 11 mm | 12 | 545 x 97 x 286 | 1 | 20 m | 6-1.6TWRWHANDLE | 6-1.6TWRW |
| 3.2 te | 5.2 te | 16 mm | 23 | 660 x 116 x 350 | 2 | 10 m | 6-3.2TWRWHANDLE | 6-3.2TWRW |

Wire Rope Winch rated in Metric Tonne = Tonnes of 1000kgs. (or 2200 pounds or 9.81 kN)

READ WARNING AND APPLICATION INFORMATION BEFORE USING



WARNING – READ AND UNDERSTAND ALL WARNINGS, MAINTENANCE, AND OPERATION INSTRUCTIONS - (SUPPLIED WITH EVERY UNIT)



Industrial Rigging & Supply

E-mail - info@industrialrigging.ca Website - www.industrialrigging.ca Toll Free (866) 942-4774